

BOLGERS PIT
809 OAKY CREEK ROAD, PIALLOWAY
LOT 139 DP 751012



BUSHFIRE EMERGENCY MANAGEMENT AND EVACUATION PLAN

DATE: 24 FEBURARY 2023

PREPARED FOR:
Gunnedah Shire Council

PREPARED BY:
Stewart Surveys Pty Ltd
107-109 Conadilly Street,
PO Box 592
GUNNEDAH NSW 2380
office@stewartsurveys.com

Stewart Surveys Reference 5831

CONTENTS

1. INTRODUCTION	2
2. FACILITY DETAILS	2
2.1 ROLES AND RESPONSIBILITIES	3
2.2 EMERGENCY CONTACTS	3
3. EVACUATION PROCEDURES	4
3.1 DESIGNATED ASSEMBLY POINTS	4
3.2 NEIGHBOURHOOD SAFE PLACES	5
3.3 OFF-SITE REFUGE (PRIMARY):	6
3.4 OFF-SITE REFUGE (ALTERNATE):	8
3.5 BEFORE AND AT THE COMMENCEMENT OF THE BUSHFIRE DANGER PERIOD	10
3.6 PROCEDURES FOR EVACUATION IN THE EVENT OF A BUSHFIRE	11
3.7 AFTER THE BUSHFIRE EVENT	12
4. SHELTERING PROCEDURE	12
5. ATTACHMENTS	12

LIST OF FIGURES

Figure 1: Designated Assembly Point	4
Figure 2: Designated Assembly Point	5
Figure 3: Neighbourhood Safe Place Overview	6
Figure 4: Proposed Primary Refuge Location	7
Figure 5: Proposed Primary Refuge Location	8
Figure 6: Proposed Alternate Refuge Location	9
Figure 7: Proposed Alternate Refuge Location	10

1. INTRODUCTION

This report has been prepared by Stewart Surveys for the Gunnedah Shire Council to accompany a development application. It is to be regularly reviewed and updated as required, at a minimum reviewed annually. The site which is referred to as the Bolgers Pit is located at 809 Oakey Creek Road, Piallaway, Lot 139 D 751012. This report is a recommendation of the Bushfire Assessment Report for Bolger's Quarry in response to the bushfire risk of the development.

This report has been prepared in accordance with the NSW Rural Fire Service (RFS) guideline titled: *Development Planning: A guide to developing a Bush Fire Emergency Management and Evacuation Plan, NSW Rural Fire Service, 2014.*

This report has identified neighbourhood safe places in accordance with the following document: *Neighbourhood safer places: Guidelines for identification and inspection of neighbourhood safer places in NSW, NSW FRS, available at <https://www.rfs.nsw.gov.au/__data/assets/pdf_file/0017/26135/NSP-Guidelines.pdf>*

2. FACILITY DETAILS

This plan is prepared for the Bolgers Pit and has been designed to assist management to protect life and property in the event of a bushfire.

This plan outlines procedures for **evacuation** from the site in the event of bushfire to enhance the protection of occupants from the threat of bush fire. It is not recommended that occupants of the site take shelter as there is no adequate refuge or protection at the subject site.

The primary action to follow under normal bush fire conditions is to:

Take Shelter ☐

Evacuate ☒

Contact Person: Grant Roberts

Position/role: Manager of Engineering Services, Gunnedah Shire Council

Mobile Phone Number: 0459 871 883

Facility Type	Bolgers Pit
Number of Buildings	Nil
Number of employees	TBC
Number of contractors (max)	TBC
Number of employees/contractors with support needs	TBC
Description of support needs (Support needs may include physical, intellectual, visual or auditory disabilities or impairments, either temporary or permanent who require support. It also includes aged persons or juveniles who are dependant on others for their care and wellbeing.)	Refer to completed schedule

2.1 ROLES AND RESPONSIBILITIES

The following outlines who has the responsibility of implementing the emergency procedures in the event of a bush fire.

Position	Name of person	Area of responsibility	Mobile Phone Number
Site Foreman	Jeff Warner	Manage evacuation and people	0428 299 535
Manager of Engineering Services	Grant Roberts	Check for threats, protection of assets, Liaison with local RFS	0459 871 883

2.2 EMERGENCY CONTACTS

Name of Organisation	Office/Contact	Phone Number
NSW Rural Fire Service	Local Fire Control Centre Liverpool Range Office:	02 6746 5800
NSW Rural Fire Service	Bushfire Information Line	1800 679 737 1800 NSW RFS
NSW Rural Fire Service	Website	www.rfs.nsw.gov.au
NSW Police Force	Werris Creek Police Station Gunnedah Police Station	6768 7444 6742 9099

3. EVACUATION PROCEDURES

For the safety of employees, contractors and site personal it has determined that it would be safest for ALL persons to evacuate the site to a designed off-site refuge. It is requested that evacuation is carried out in an orderly fashion with the movement of people from the place of danger.

3.1 DESIGNATED ASSEMBLY POINTS

There is one designated assembly point as described below and identified in **Figure 1**.

Bolgers Pit: Signed Posted at the front gate of the site

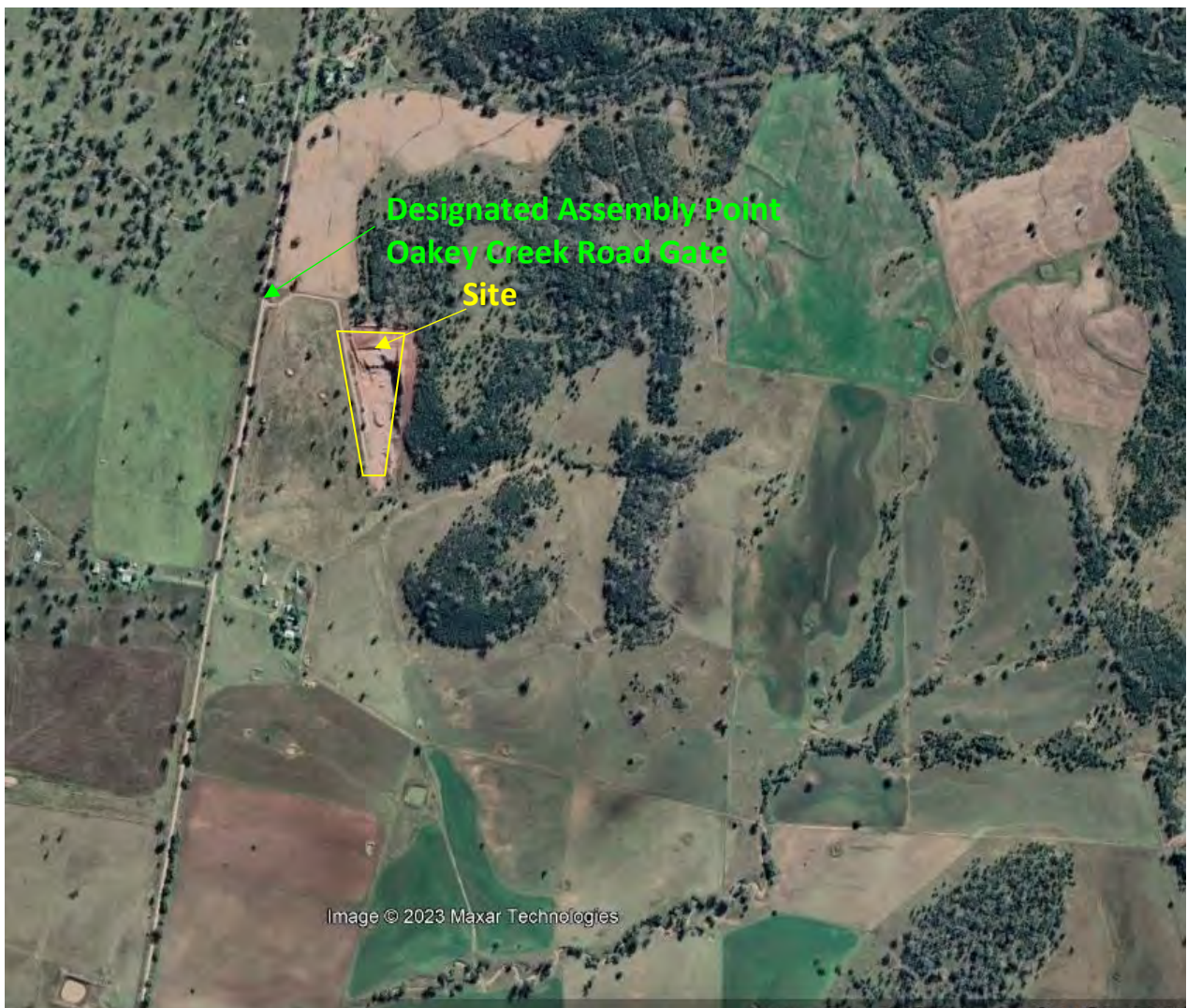


Figure 1: Designated Assembly Point



Figure 2: Designated Assembly Point

3.2 NEIGHBOURHOOD SAFE PLACES

The subject site is located between Breeza and Carroll on Oakey Creek Road. Depending on the direction of the bushfire risk evacuation to a neighbourhood safe place should take place primarily to Breeza's neighbourhood safe place outlined below as the primary off-site refuge or to Carroll's neighbourhood safe place if the risk of fire presents from the south of the site as outlined in the alternative off-site refuge. **Figure 3** shows the proximity of the site to the nearby neighbourhood safe places.

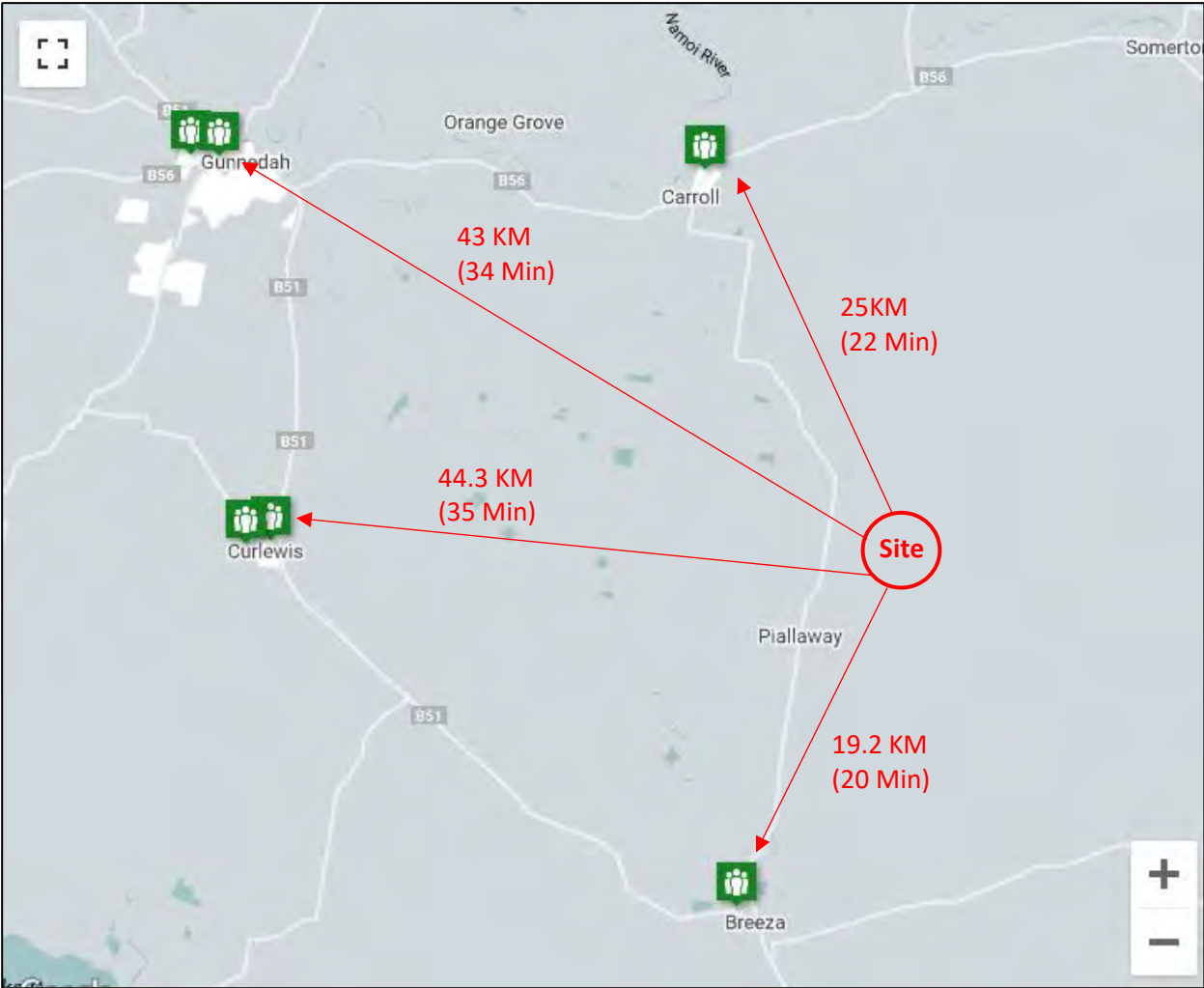


Figure 3: Neighbourhood Safe Place Overview

3.3 OFF-SITE REFUGE (PRIMARY):

Name of Venue:	Breeza Park / Ben Hall's Wall
Address of venue:	45 - 63 Main Street Breeza NSW 2381
Nearest Cross-street:	Kamilaroi Highway, Breeza
Distance from Site:	19.2 Kilometres
Map Reference:	Latitude: -31.246863 Longitude: 150.463152
Directions:	Exit Site and turn left onto Oakey Creek Road, Take Round Hill Road to Clifton Road (14 Min, 14km) Continue on Clifton Road to Main Street (6 Min, 5.1km) Turn left onto Main Street, Destination will on the right (51 m)

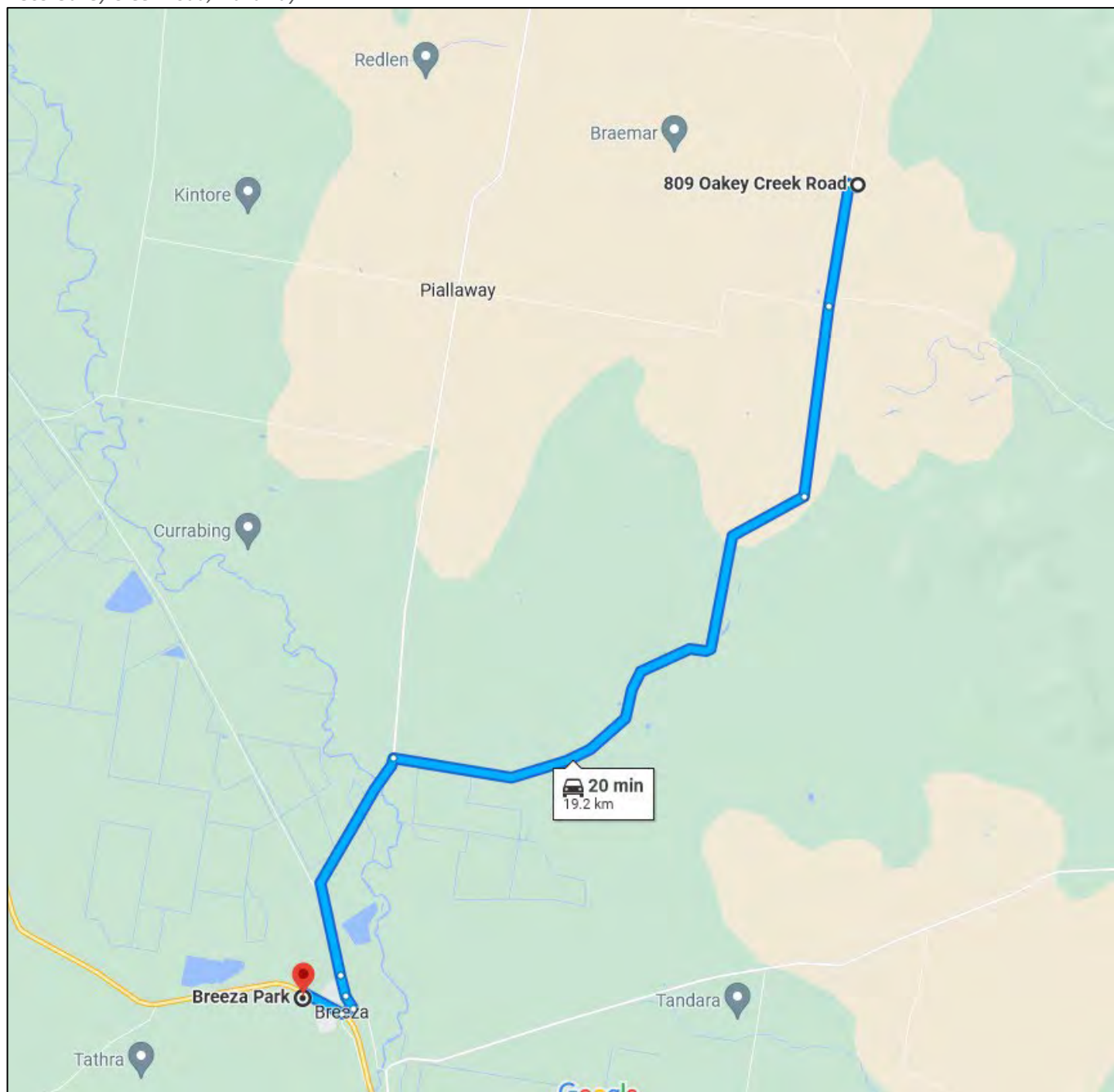


Figure 4: Proposed Primary Refuge Location

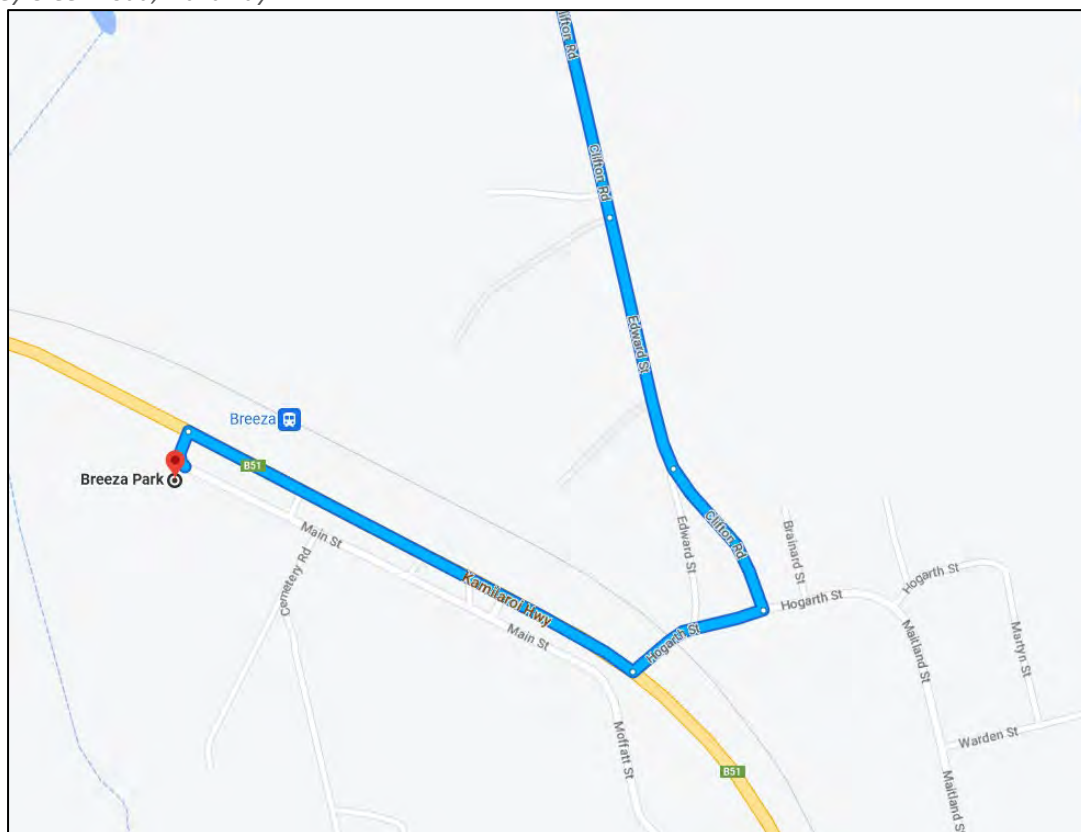


Figure 5: Proposed Primary Refuge Location

3.4 OFF-SITE REFUGE (ALTERNATE):

Name of Venue:	Carroll Community Ground
Address of venue:	David Street, Carroll NSW 2340
Nearest Cross-street:	Breeza Street
Map Reference:	Latitude: -30.984672 Longitude: 150.447041
Distance from site:	25 Kilometres
Directions:	<p>Exit Site and turn right onto Oakey Creek Road,</p> <p>Head north-west towards Oakey Creek Road (140m)</p> <p>Turn Right onto Oakey Creek Road (8.1km)</p> <p>Turn Right onto Clifton Road (15.6km)</p> <p>Continue onto Howe Street (180m)</p> <p>Turn Right onto Breeza Street / Oxley Highway / B56</p> <p>Destination will be on the right</p>

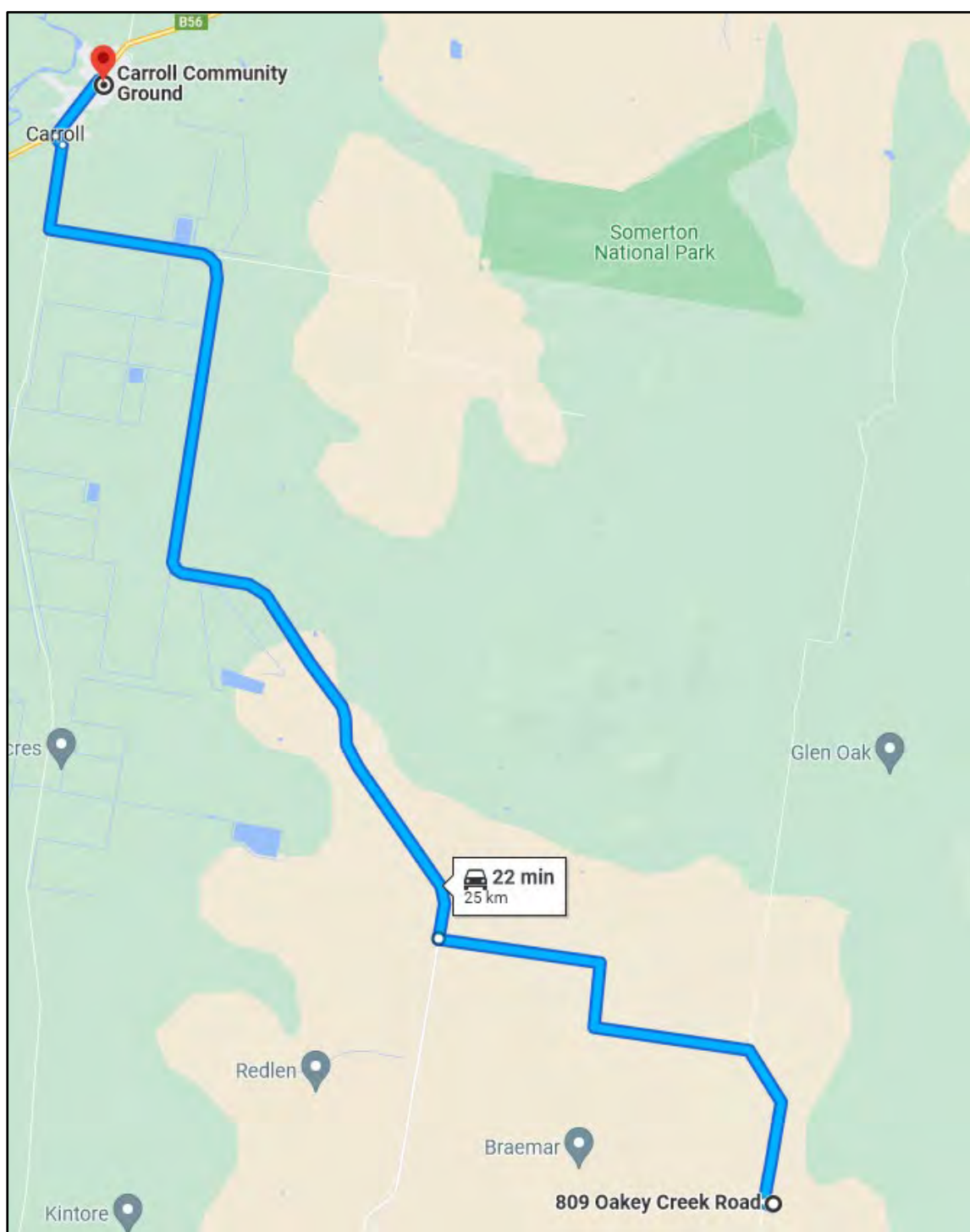


Figure 6: Proposed Alternate Refuge Location

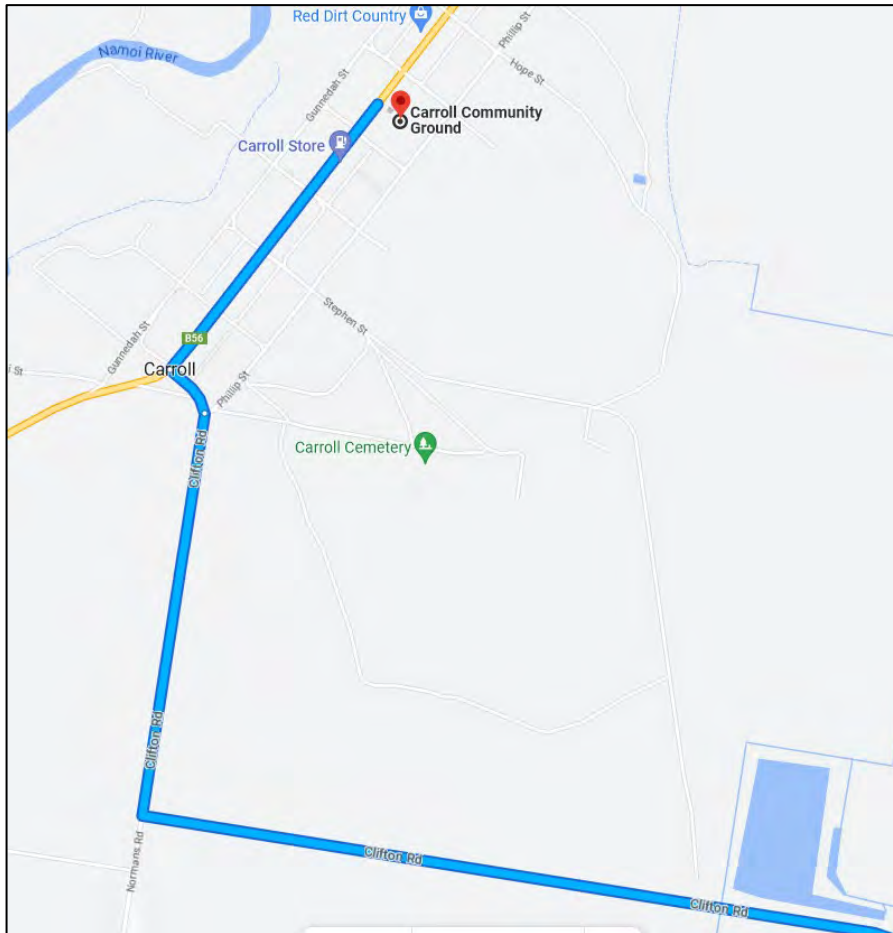


Figure 7: Proposed Alternate Refuge Location

3.5 BEFORE AND AT THE COMMENCEMENT OF THE BUSHFIRE DANGER PERIOD

The following actions will be undertaken prior to, before and at the commencement of the bushfire danger period 1st October to 31st March.

- a. Ensure that all staff are prepared in accordance with the Bushfire Emergency Management and Evacuation Plan.
- b. Ensure all persons are informed of the evacuation procedures in place for the site.
- c. Ensure people at the site are provided with a copy of this document outlining what to do if the site is to be evacuated upon arrival.
- d. Ensure fire fighting equipment such as portable extinguishers and hoses are serviced and available.
- e. Ensure vegetation around the site is maintained to minimise the risk of bushfire.
- f. Ensure contractor details schedules are up to date, particularly listing any special needs of staff or contractors.
- g. Contact refuge for potential use during a bush fire emergency

3.6 PROCEDURES FOR EVACUATION IN THE EVENT OF A BUSHFIRE

The following section describes the triggers and associated action plan.

Trigger: Concern for fire in the area due to the presence of smoke in the atmosphere.

Response Action

1. Consult the NSW RFS website or phone 1800 NSW RFS to ascertain situation and presence of a bushfire threat in the area.

Trigger: Confirmation of a fire risk in the area

Response Action

1. Inform all staff of the fire situation.
2. Ensure the fire warden has a mobile phone and is contactable.
3. Advise the local emergency service if there are staff on site. It will need to be advised early in the event of an evacuation being necessary

Trigger: Bushfire approaching and threatening the premises, the primary action is to evacuate (voluntary or forced by authority)

Response Action

1. Fire Warden to take control of the situation, and contact the local emergency service (PHONE) that the centre is being evacuated. Advise how many people and where they are going. Remember the safest option is to leave early.
2. Arrange for vehicles to meet at the designated assembly point for pickup of persons.
3. Move all persons to the assembly point for evacuation.
4. Ensure all persons are accounted for prior to departure using employee list.
5. At refuge, ensure all persons are accounted for and are safe.
6. Fire Warden to advise the local emergency service (PHONE) that all persons have been evacuated and are accounted for and safe at the designated refuge.

7. After all the site personnel are accounted for and safe at the designated refuge nominated staff will be contacting affected families as necessary.
8. Maintain situational awareness through radio NSW RFS website, 1800 NSW RFS, smartphone application and local firefighting resources.

3.7 AFTER THE BUSHFIRE EVENT

- a. No persons should re-enter any evacuated area until advised by the emergency service.
- b. The fire warden (or responsible person) to arrange the movement of staff back to site to assess damage
- c. All staff are to be accounted for on their return
- d. Inform the policy/emergency service of the return of persons to premises.

4. SHELTERING PROCEDURE

Sheltering is not recommended at Bolgers Pit due to the lack of adequate refuge or facilities.

5. ATTACHMENTS

1. Employee Listing

BOLGERS PIT EVACUATION SCHEDULE

Site Forman Name: JEFF WARNER

Phone Number: 0428 299 535

Quarry Owner: GUNNEDAH SHIRE COUCNIL

Total Number of Employees Proposed: _____

LIST OF EMPLOYEES & CONTRACTORS

[illegible]

COPYRIGHT ©

This report and the plans enclosed are the copyright of Stewart Surveys Pty Ltd. and is protected under the Copyright Act 1968. It may not be altered, reproduced or transmitted in any form, or by any means without the express permission of Stewart Surveys Pty Ltd.

Stewart Surveys, Pty Ltd

107-109 Conadilly Street,
PO Box 592
GUNNEDAH NSW 2380

Ph. (02) 6742 2966

office@stewartsurveys.com

<http://www.stewartsurveys.com>